

ehB
RESIDENTIAL

Your Property - Our Business



11, Newfield Avenue, Kenilworth

Price Guide £450,000



An excellent opportunity to acquire this spacious, mature detached bungalow situated on a corner plot with a well-established private garden in a highly sought-after residential location. The accommodation briefly comprises: a generous inner hall with doors leading to the lounge, a conservatory enjoying garden views, a modern fitted kitchen, two double bedrooms and a bathroom with bath and shower enclosure. Outside, there is an extensive driveway for several vehicles, a covered carport, and a garage with an electric door. NO UPWARD CHAIN. Energy rating D.

Location

Newfield Avenue is located on the east side of Kenilworth, just off Windy Arbour, and is only a 15-minute leisurely walk into town. Kenilworth Rugby Club is nearby, along with Kenilworth Wardens Football, Cricket, and Running Club. There is also good schooling for all ages in the vicinity. The A46 offers quick access to Coventry, Warwick, Stratford, and the M40 motorway, as well as neighbouring Leamington Spa, making this a superb location for anyone commuting for work or leisure.

Approach

The main entrance door is located on the side of the house with direct access via a double-glazed entrance door into the:

Fitted Kitchen

11'8" x 6'6" (3.57m x 2.00m)

Range of white gloss fronted base and eye-level units, complementary worktops and upstands, tiled splashbacks, and a single drainer sink unit with mixer tap. Neff induction hob with extractor over, Bosch electric oven with combination/microwave





above. Integrated dishwasher and washing machine, space for an upright fridge/freezer, tall larder unit, downlighters, plinth heater, cupboard, housing the wall-mounted Baxi gas-fired boiler and a double-glazed window to the rear aspect. Door to:

Spacious Inner Hall

11'8" x 8'3" (3.56m x 2.54m)

Features include a tiled floor, radiator, built-in shelved storage cupboard, and wall-mounted Honeywell digital thermostat control panel. Double-glazed double-opening doors lead through to the Conservatory. Doors radiate off to:

Lounge

16'11" x 11'4" (5.18m x 3.47m)

Focal point fireplace with inset gas fire, coving to the ceiling, two radiators and double-glazed windows to the front and side aspects.

Dining Conservatory

11'6" x 11'3" (3.53m x 3.44m)

Again featuring a tiled floor with underfloor heating, wall lights, and power sockets. Double-glazed windows on three sides overlooking the gardens and double-glazed French doors provide access to the rear garden.

Bedroom One

11'10" x 9'11" (3.62m x 3.03m)

Built-in bedroom furniture providing hanging rail, drawers and storage space with a double bed insert, radiator and a double-glazed window to the front aspect.

Bedroom Two

11'11" max x 11'5" (3.64m max x 3.48m)

The room features built-in full-height part-mirrored twin double door wardrobes, a radiator, and double-glazed windows to the side and rear aspects.





Bathroom

White suite comprising bath, pedestal wash hand basin, WC. Tiled shower enclosure with Bristan shower system. Electric heated chrome towel rail, extractor fan, downlighters, radiator and a double-glazed window.

Outside

Driveway & Carport

The property has a large driveway that leads to a covered carport and garage.

Garage

4.7m x 2.44m

Having an electric roller shutter door, light and power are fitted.

Established Gardens

As this property is situated on a pleasant and generous corner plot, it features mature gardens to the front, side, and rear. The attractive garden is mainly laid to lawn with established, stocked borders and specimen trees. Fencing and screening provide privacy. At the rear, there is additional gated access where the shed is situated.

Tenure

The property is understood to be freehold although we have not inspected the relevant documentation to confirm this.

Services

All mains services are understood to be connected. NB We have not tested the heating, domestic hot water system, kitchen appliances or other services and whilst believing them to be in satisfactory working order cannot give warranties in these respects. Interested parties are invited to make their own inquiries.





Council Tax

The property is in Council Tax Band "D" - Warwick District Council

Postcode

CV8 2AU

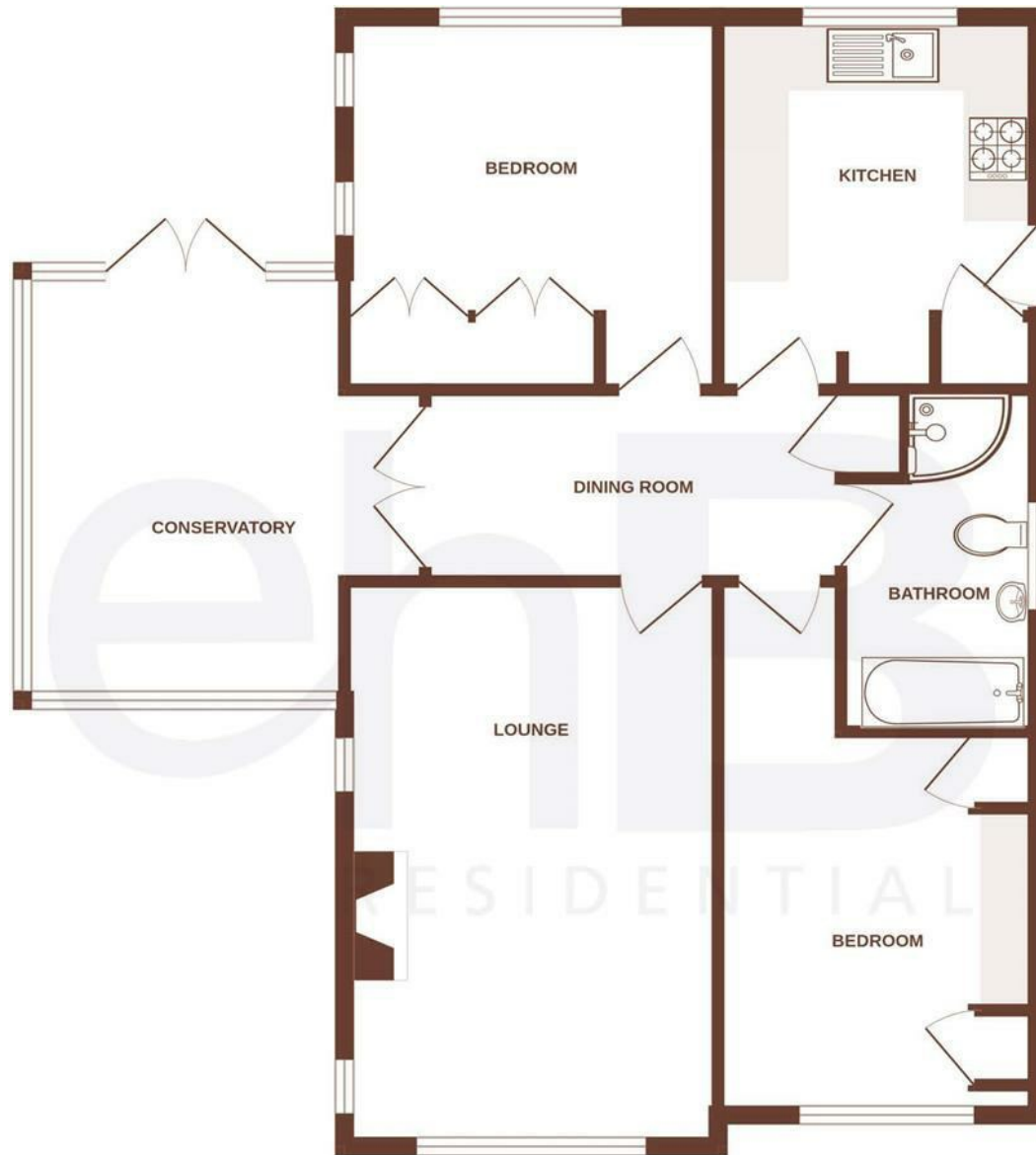
Connected Person

In accordance with the terms of the Estate Agents Act 1979, as amended, applicants are advised that the vendor is also a relative of a member of staff at EHB.



Your Property - Our Business

- Residential Estate Agents •
- Lettings and Property Managers •
- Land and New Homes Agents •



Made with Metropix ©2024

Warwick Office
17-19 Jury Street
Warwick
CV34 4EL

☎ 01926 499540 🌐 ehbresidential.com

Energy Efficiency Rating		Current	Potential
<i>Very energy efficient - lower running costs</i>			
(92 plus) A			
(81-91) B			
(69-80) C			
(55-68) D			
(39-54) E			
(21-38) F			
(1-20) G			
<i>Not energy efficient - higher running costs</i>			
			83
		66	
England & Wales			EU Directive 2002/91/EC

Also at: Leamington Spa, Somerset House,
Clarendon Place, Royal Leamington Spa CV32 5QN

IMPORTANT NOTICE ehB Residential for themselves and for the Vendors of this property, whose agents they are, give notice that:- 1. The particulars are intended to give a fair and substantially correct overall description for the guidance of intending purchasers and do not constitute part of an offer or contract. Prospective purchasers and lessees ought to seek their own professional advice. 2. All descriptions, dimensions, areas, reference to condition and necessary permissions for use and occupation and other details are given in good faith, and are believed to be correct, but any intending purchasers should not rely on them as statements or representations of fact, but must satisfy themselves by inspection or otherwise as to the correctness of each of them. 3. No person in the employment of ehB Residential has any authority to make or give any representations or warranty whatever in relation to this property on behalf of ehB Residential, nor enter into any contract on behalf of the Vendor. 4. No responsibility can be accepted for any expenses incurred by intending purchasers in inspecting properties which have been sold, let or withdrawn. Measurement and other information. All measurements are approximate. While we endeavour to make our sales particulars accurate and reliable, if there is any point which is of particular importance to you, please contact this office and we will be pleased to check the information for you, particularly if contemplating travelling some distance to view the properties. 5. The agents will require identity documentation and evidence of address before entering into any transaction under money laundering regulations 2007.